

Newport 26 in West Secord

9352 230 Street NW

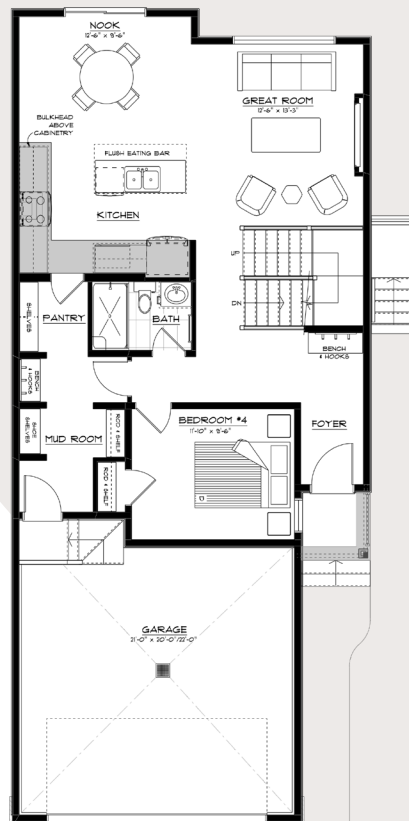
2,000 SQFT • 4 Bedrooms • 3 Bathrooms



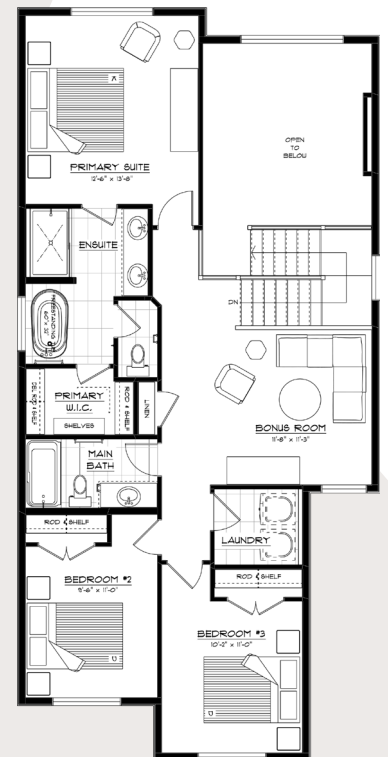
KEY FEATURES

- Stunning Modern Farmhouse elevation with eye-catching curb appeal
- Recessed side entrance with 9' foundation walls and oversized basement windows for added natural light
- Functional foyer featuring a built-in bench and hooks for everyday organization
- Spacious mudroom with a built-in bench, hooks, shoe shelves, and convenient walk-through pantry access
- Main floor fourth bedroom and full bathroom, ideal for guests or multi-generational living
- Large kitchen island with a flush eating bar, perfect for entertaining and casual dining
- Cozy dining nook designed for everyday meals and family gatherings
- Stunning open-to-above great room centered around a 60" electric fireplace
- Convenient second-floor laundry designed for everyday ease
- Central bonus room overlooking the great room below
- Luxurious 5-piece primary ensuite featuring dual sinks, a freestanding tub, glass shower with a full-width tiled shampoo ledge, and a spacious walk-in closet

MAIN FLOOR



SECOND FLOOR



westsecord@parkwoodhomes.ca

DISCLAIMER: Actual building units may not be exactly as shown. Renderings + blacklines are for illustrative purposes only and are subject to change without notice. All rights reserved, including the right of reproduction in whole or in part.

