

Alexandria 26 in Perch at Mattson

6311 30 Avenue SW

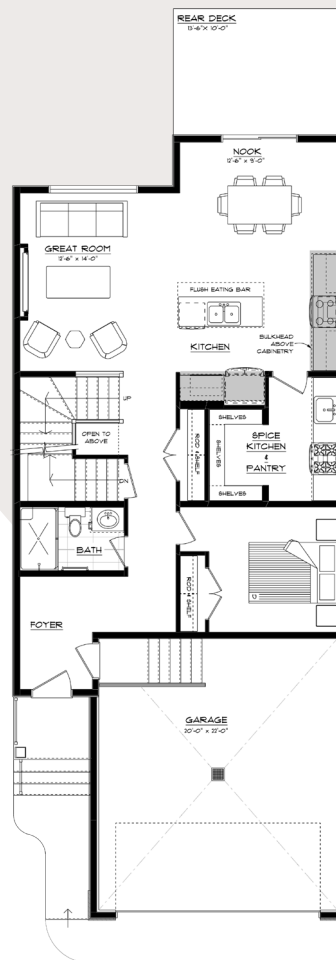
2,267 SQFT • 5 Bedrooms • 4 Bathrooms



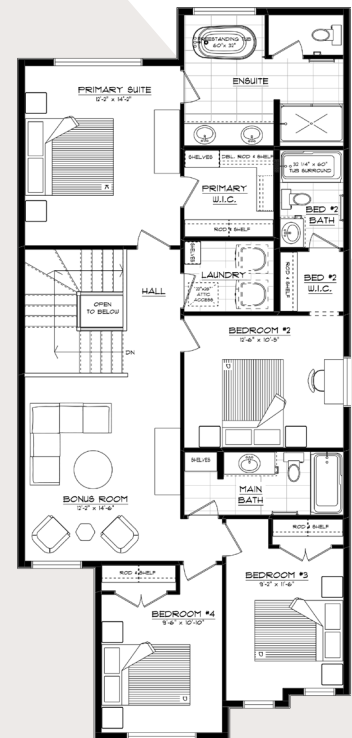
KEY FEATURES

- Stunning Modern Farmhouse elevation with standout curb appeal
- Functional foyer with a built-in bench and hooks for everyday organization
- Main floor 5th bedroom and 4th bathroom—ideal for guests or multi-generational living
- Oversized pantry and spice kitchen with a window and exceptional storage space
- Spacious kitchen island with a flush eating bar beside a cozy dining nook
- Elegant 60" electric fireplace featured in the great room
- Luxurious 5-piece ensuite with dual vanities and a freestanding tub
- Ensuite shower with a tiled full-width shampoo ledge for a refined finish
- Convenient second-floor laundry designed for everyday ease
- Large central bonus room surrounded by generously sized secondary bedrooms
- Bedroom #2 features a walk-through closet and private junior ensuite
- Walkout basement with 9' foundation walls, oversized windows, and a raised deck with durable vinyl decking

MAIN FLOOR



SECOND FLOOR



mattson@parkwoodhomes.ca

DISCLAIMER: Actual building units may not be exactly as shown. Renderings + blacklines are for illustrative purposes only and are subject to change without notice. All rights reserved, including the right of reproduction in whole or in part.

