

Presley 22 in Rivers Edge

1839 188 Street NW

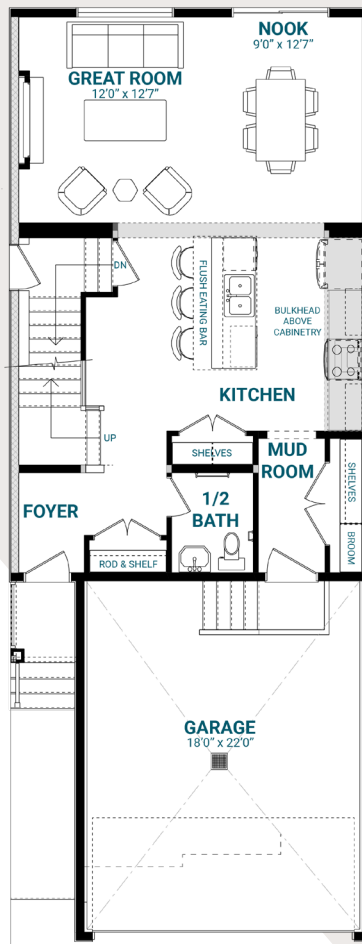
1,760 SQFT • 3 Bedrooms • 2.5 Bathrooms



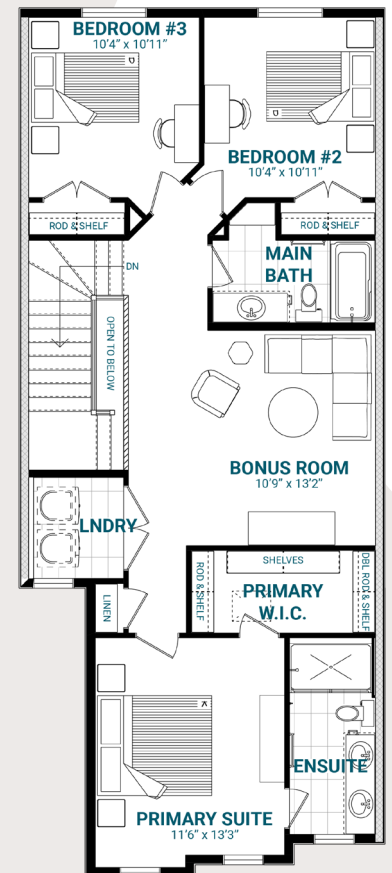
KEY FEATURES

- Contemporary elevation
- Separate side entrance, nine-foot foundation, and a large basement window
- Welcoming foyer with a convenient coat closet
- Luxury vinyl plank on the main floor
- Generous mud room with walk-through access to the kitchen
- Inviting open-concept living space
- Substantial island with a flush eating bar in the galley-style kitchen
- Large pantry with built-in shelving
- 60" electric fireplace in the great room
- Open-to-below staircase to the second floor
- Second-floor laundry for your convenience
- Central bonus room and three bedrooms upstairs
- Impressive four-piece primary ensuite with dual vanities and a separate glass shower with a tiled ledge
- Stylish shiplap feature wall in the primary suite

MAIN FLOOR



SECOND FLOOR



riversedge@parkwoodhomes.ca

DISCLAIMER: Actual building units may not be exactly as shown. Renderings + blacklines are for illustrative purposes only and are subject to change without notice. All rights reserved, including the right of reproduction in whole or in part.

Parkwood