

Victoria 24 in Marquis Ravine

17113 3 Street NE

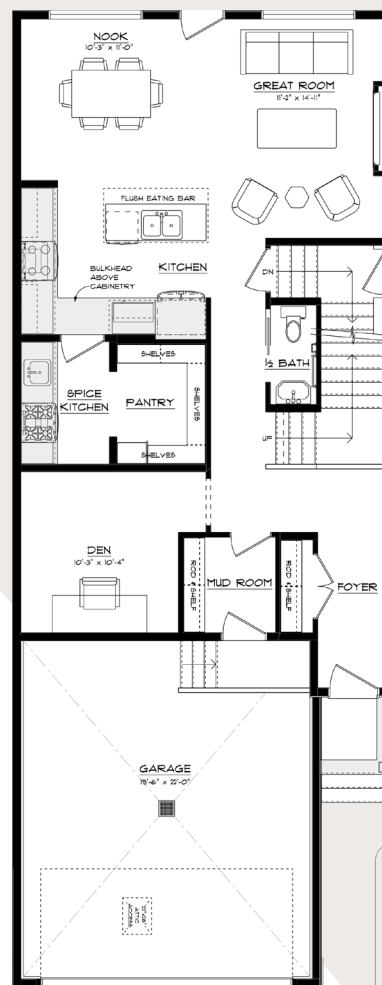
2,203 SQFT • 4 Bedrooms • 3.5 Bathrooms



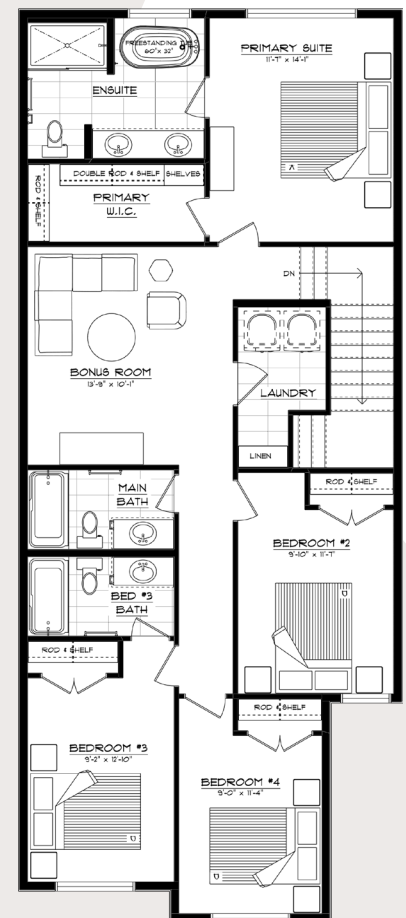
KEY FEATURES

- Stunning Modern Farmhouse elevation with eye-catching curb appeal
- Zero lot line design, maximizing land use
- Spacious spice kitchen and large pantry offering plenty of storage and prep space
- Cozy dining nook beside the kitchen with a substantial island and flush eating bar
- Elegant 60" electric fireplace featured in the great room
- Luxurious 5-piece, primary ensuite with dual sinks, freestanding tub, and large walk-in closet
- Ensuite shower featuring a tiled, full-width shampoo ledge for a refined finish
- Centrally located bonus room separating the primary suite from the spacious secondary bedrooms
- Convenient second-floor laundry designed for everyday ease
- Bedroom #3 includes its own private bathroom for added comfort and privacy
- 9' foundation walls for added basement space and openness
- Upgraded 200-amp, solar-ready electrical panel for future flexibility

MAIN FLOOR



SECOND FLOOR



fraser@parkwoodhomes.ca

DISCLAIMER: Actual building units may not be exactly as shown. Renderings + blacklines are for illustrative purposes only and are subject to change without notice. All rights reserved, including the right of reproduction in whole or in part.

