

# Victoria 24

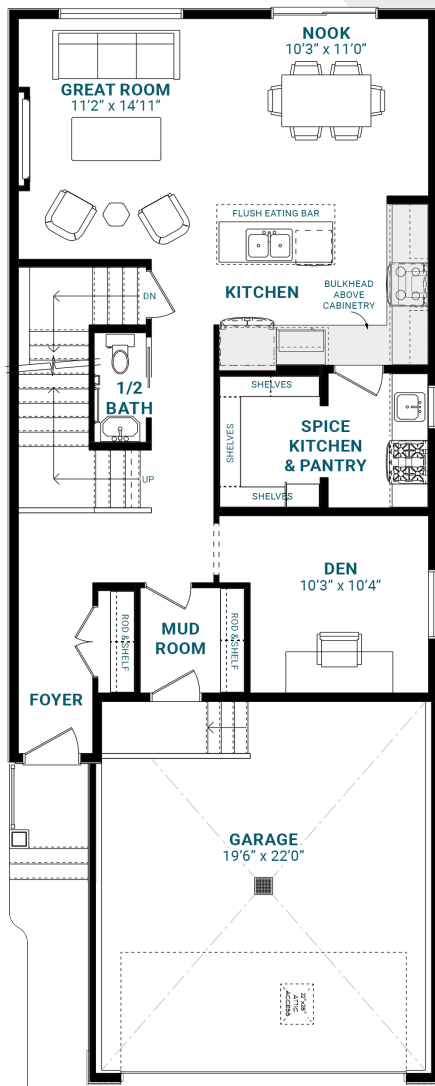
2,203 SQFT | 24' Wide | 4 Bedrooms | 3.5 Bathrooms

## KEY FEATURES

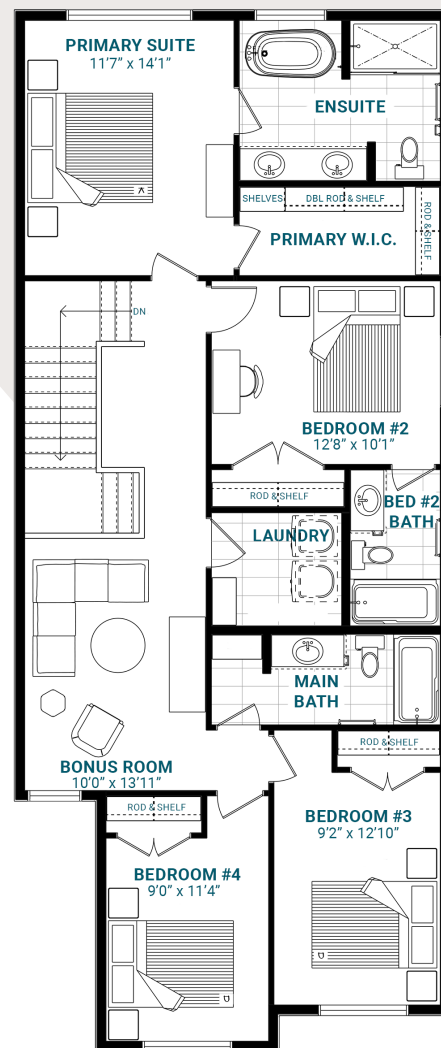
- Walk-through mud room
- Generous den downstairs
- Standard spice kitchen
- 60" LED electric great room fireplace
- Second-floor laundry
- Luxurious five-piece primary ensuite with dual vanities
- Additional ensuite in bedroom #2



MAIN FLOOR



SECOND FLOOR



[info@parkwoodhomes.ca](mailto:info@parkwoodhomes.ca) | [parkwoodhomes.ca](http://parkwoodhomes.ca)

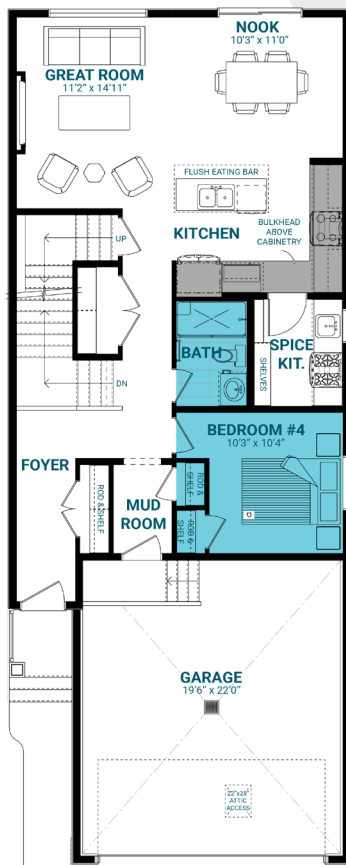
DISCLAIMER: Actual building units may not be exactly as shown. Renderings + blacklines are for illustrative purposes only and are subject to change without notice. All rights reserved, including the right of reproduction in whole or in part.  
2026 Master Plan



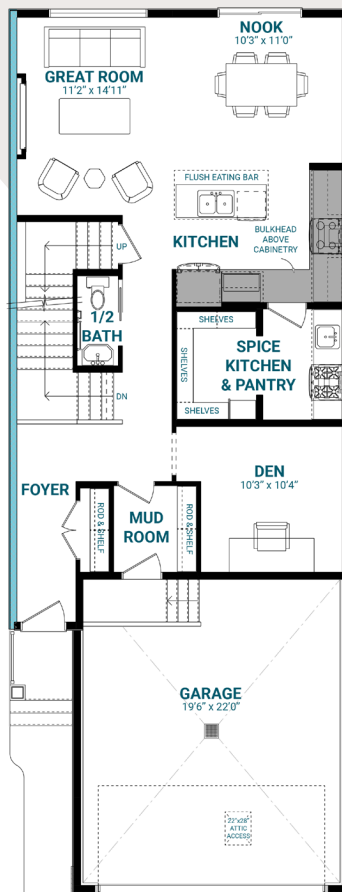
# Victoria 24

## MODEL OPTIONS

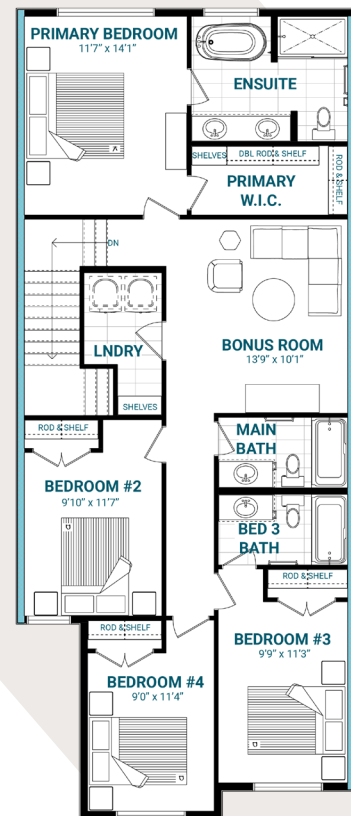
MAIN BED & BATH



ZERO LOT LINE - MAIN



ZERO LOT LINE - UPPER



info@parkwoodhomes.ca | parkwoodhomes.ca

DISCLAIMER: Actual building units may not be exactly as shown. Renderings + blacklines are for illustrative purposes only and are subject to change without notice. All rights reserved, including the right of reproduction in whole or in part.  
2026 Master Plan

