

Newport 24 in Rivers Edge

1835 186 Street NW

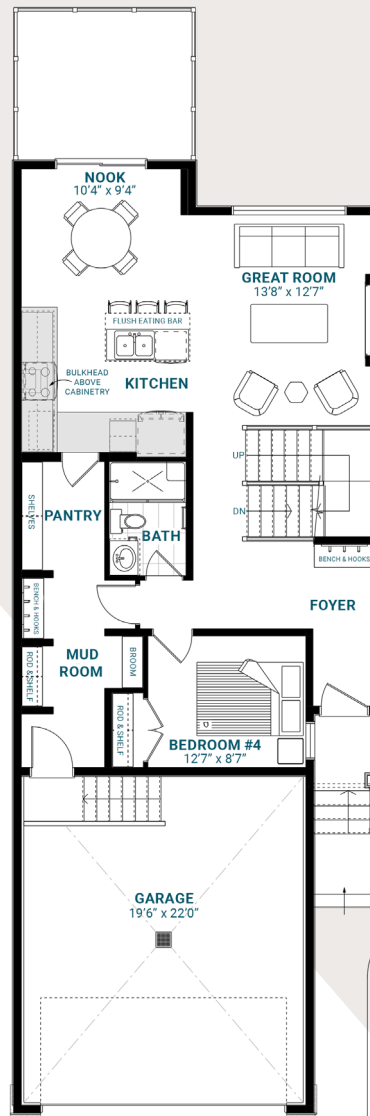
1,921 SQFT • 4 Bedrooms • 3 Bathrooms



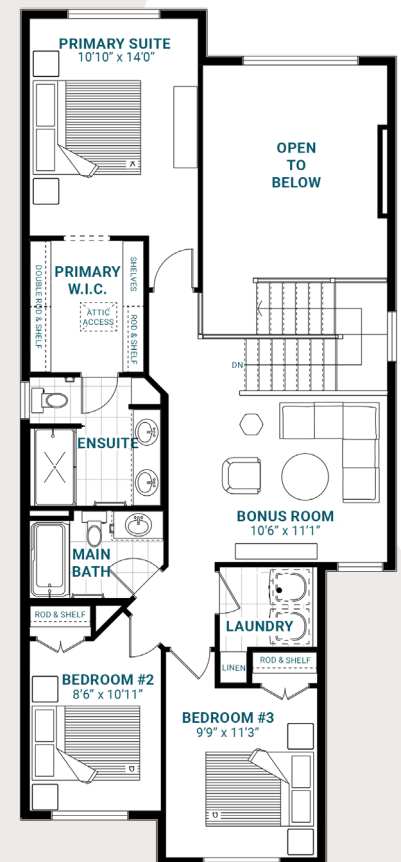
KEY FEATURES

- Prairie elevation with a beautiful, modern look
- Walkout basement with a nine-foot foundation and an additional window
- Walkout deck overlooking the pond
- A built-in bench and hooks in the mud room and foyer
- Fourth bedroom at 11' x 10' and full bathroom with a stand-up shower on the main floor
- Walk-through pantry with MDF shelving
- 60" electric fireplace on a shiplap feature wall in the two-storey great room
- Substantial island with an eating bar in the kitchen
- Aluminum railing on the staircase comes standard
- Second-floor laundry for your convenience
- Central bonus room overlooking the great room below
- Three generous bedrooms upstairs
- Luxurious four-piece primary ensuite with dual vanities and a separate glass shower with a shampoo ledge
- Stylish shiplap feature wall and a large walk-in closet in the primary suite

MAIN FLOOR



SECOND FLOOR



riversedge@parkwoodhomes.ca

DISCLAIMER: Actual building units may not be exactly as shown. Renderings + blacklines are for illustrative purposes only and are subject to change without notice. All rights reserved, including the right of reproduction in whole or in part.

