

Westport 28

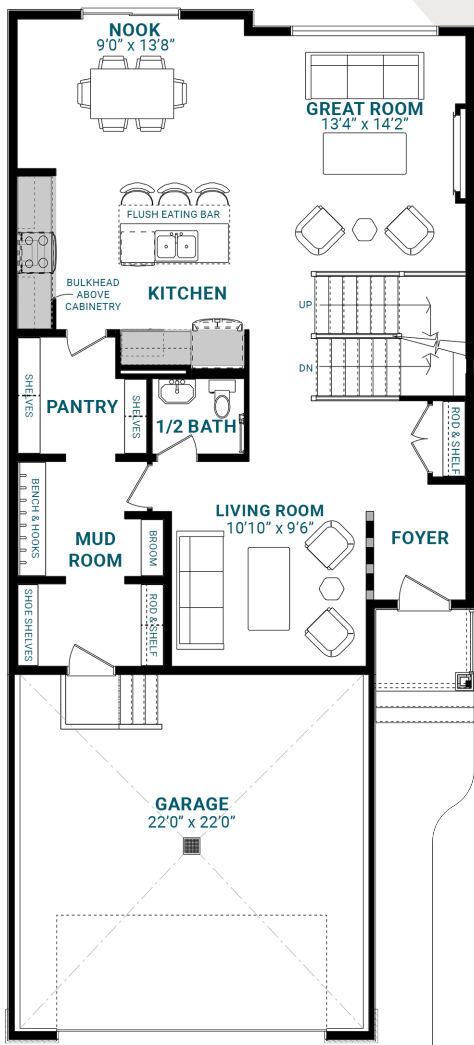
2,310 SQFT | 28' Wide | 3 Bedrooms | 2.5 Bathrooms

KEY FEATURES

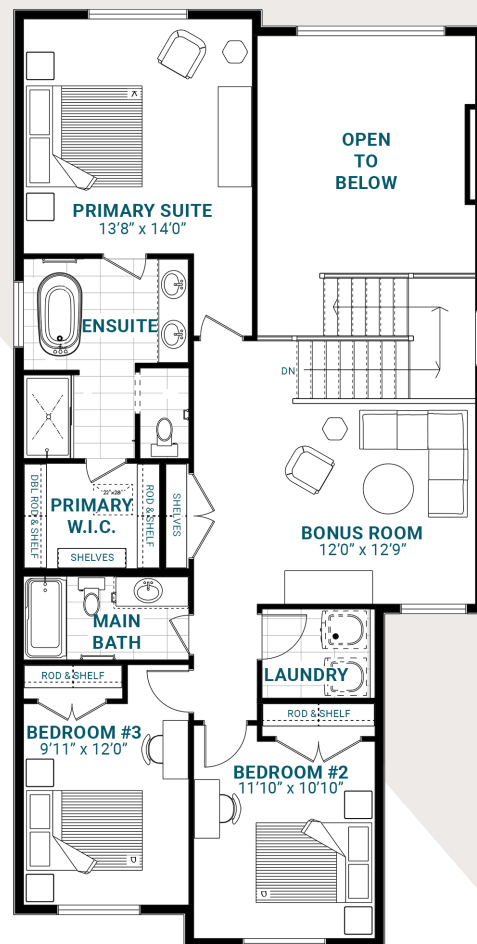
- Extended mud room with walk-through pantry access
- Formal living room off the foyer
- Open-to-below ceilings and 60" electric fireplace in the great room
- Second-floor laundry
- Central bonus room and three bedrooms upstairs
- Luxurious five-piece primary ensuite with a walk-in closet and laundry access



MAIN FLOOR



SECOND FLOOR



info@parkwoodhomes.ca | parkwoodhomes.ca

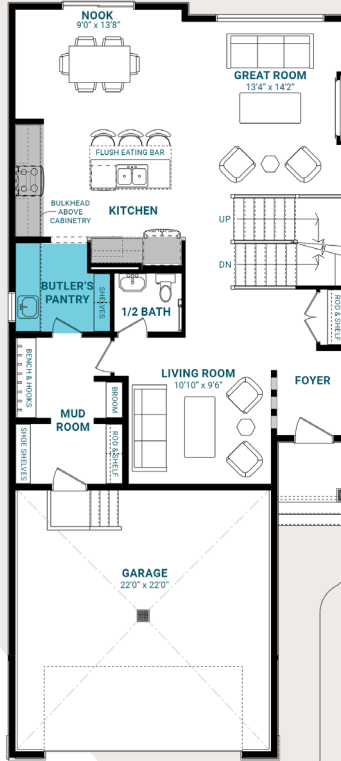
DISCLAIMER: Actual building units may not be exactly as shown. Renderings + blacklines are for illustrative purposes only and are subject to change without notice. All rights reserved, including the right of reproduction in whole or in part.
2026 Master Plan



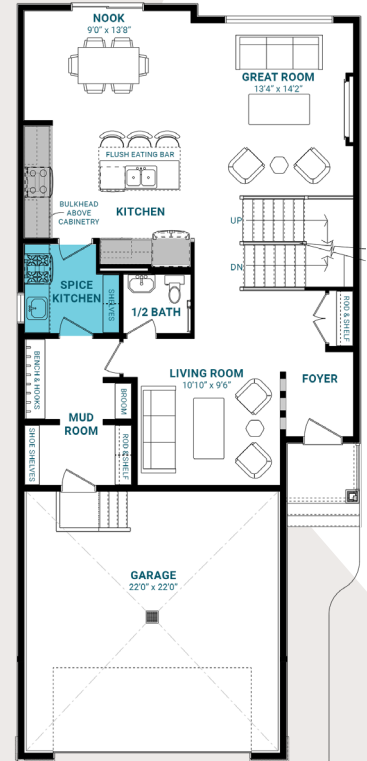
Westport 28

MODEL OPTIONS

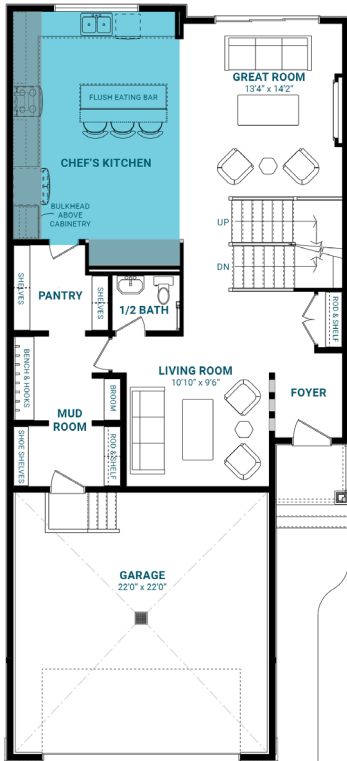
BUTLER'S PANTRY



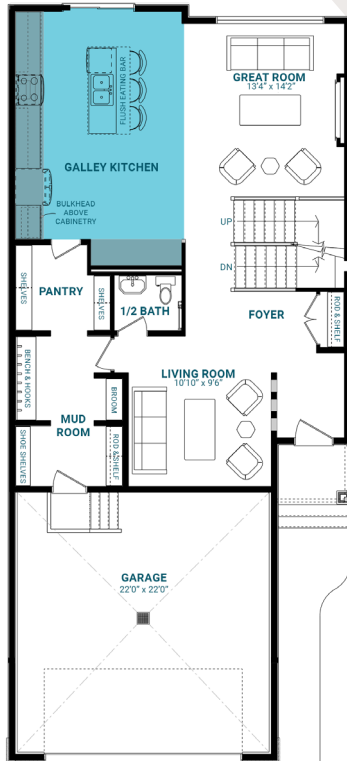
SPICE KITCHEN



CHEF'S KITCHEN



GALLEY KITCHEN



info@parkwoodhomes.ca | parkwoodhomes.ca

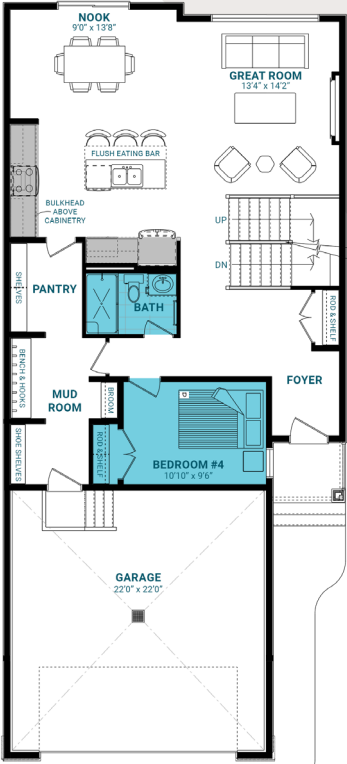
DISCLAIMER: Actual building units may not be exactly as shown. Renderings + blacklines are for illustrative purposes only and are subject to change without notice. All rights reserved, including the right of reproduction in whole or in part.



Westport 28

MODEL OPTIONS

MAIN FLOOR BED & BATH



ENTERTAINMENT BONUS ROOM

