

Presley 22

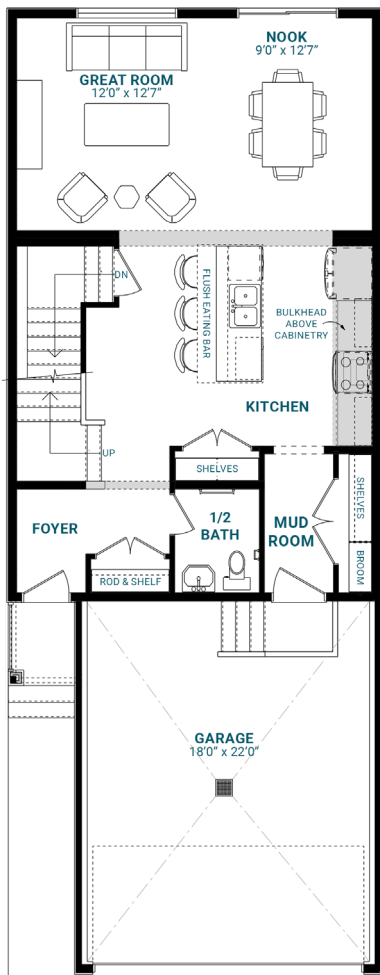
1,760 SQFT | 22' Wide | 3 Bedrooms | 2.5 Bathrooms

KEY FEATURES

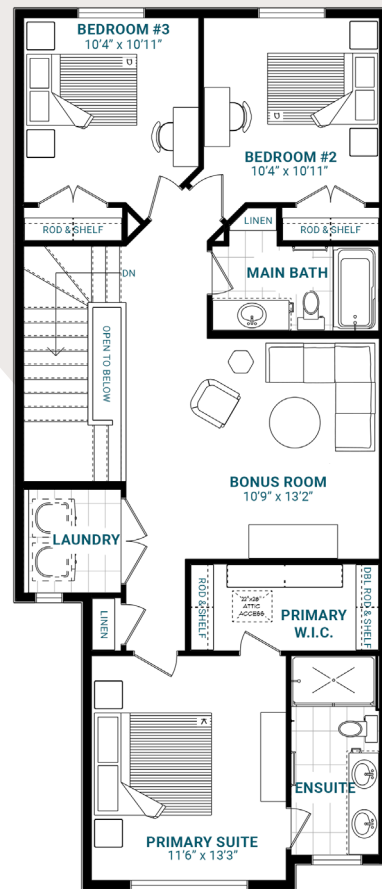
- Spacious mud room with direct access to the kitchen
- Galley kitchen with an expansive eating bar
- Generous dining nook
- Central bonus room
- Second-floor laundry for your convenience
- Open-to-below stairwell
- Impressive four-piece primary ensuite with a spacious walk-in closet



MAIN FLOOR



SECOND FLOOR



info@parkwoodhomes.ca | parkwoodhomes.ca

DISCLAIMER: Actual building units may not be exactly as shown. Renderings + blacklines are for illustrative purposes only and are subject to change without notice. All rights reserved, including the right of reproduction in whole or in part.
2026 Master Plan

