

Parker 22 in West Secord

9303 230 Street NW

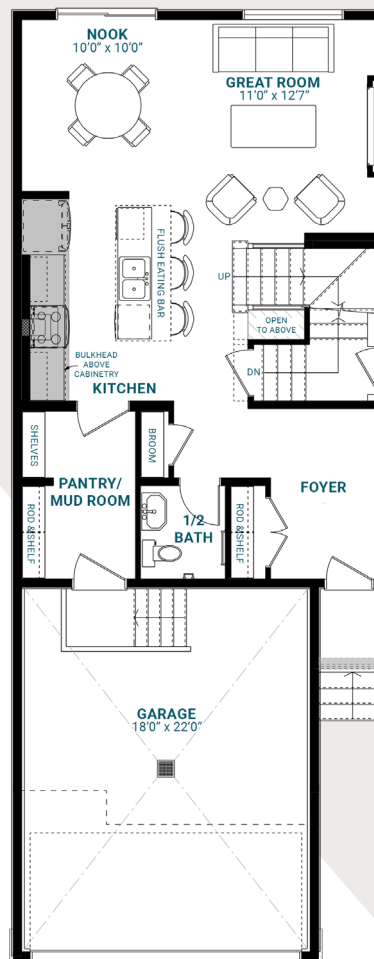
1,661 SQFT • 3 Bedrooms • 2.5 Bathrooms



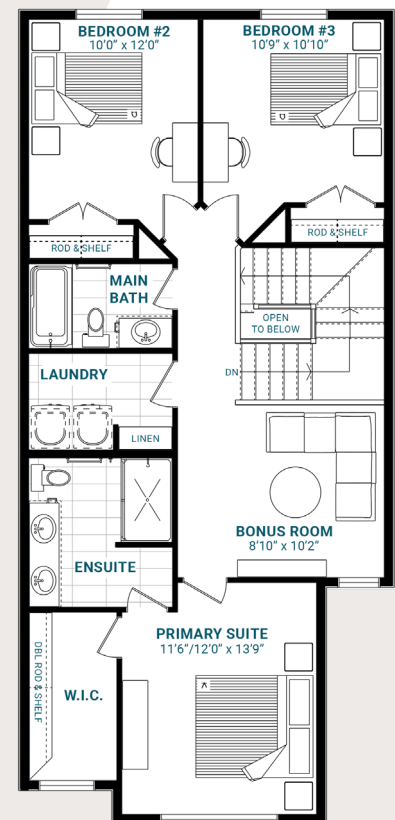
KEY FEATURES

- Modern Farmhouse elevation
- Separate side entrance
- Spacious mud room and a large walk-through pantry
- Inviting open-concept layout
- Substantial island with a flush eating bar in the kitchen
- 60" electric fireplace in the great room
- Second-floor laundry for your convenience
- Cozy central bonus room
- Impressive four-piece ensuite and generous walk-in closet in the primary bedroom

MAIN FLOOR



SECOND FLOOR



westsecord@parkwoodhomes.ca

DISCLAIMER: Actual building units may not be exactly as shown. Renderings + blacklines are for illustrative purposes only and are subject to change without notice. All rights reserved, including the right of reproduction in whole or in part.

Parkwood