

Westport 32'

in Uplands at Riverview

2504 213 Street NW

2,697 SQFT • 4 Bedrooms • 3 Bathrooms

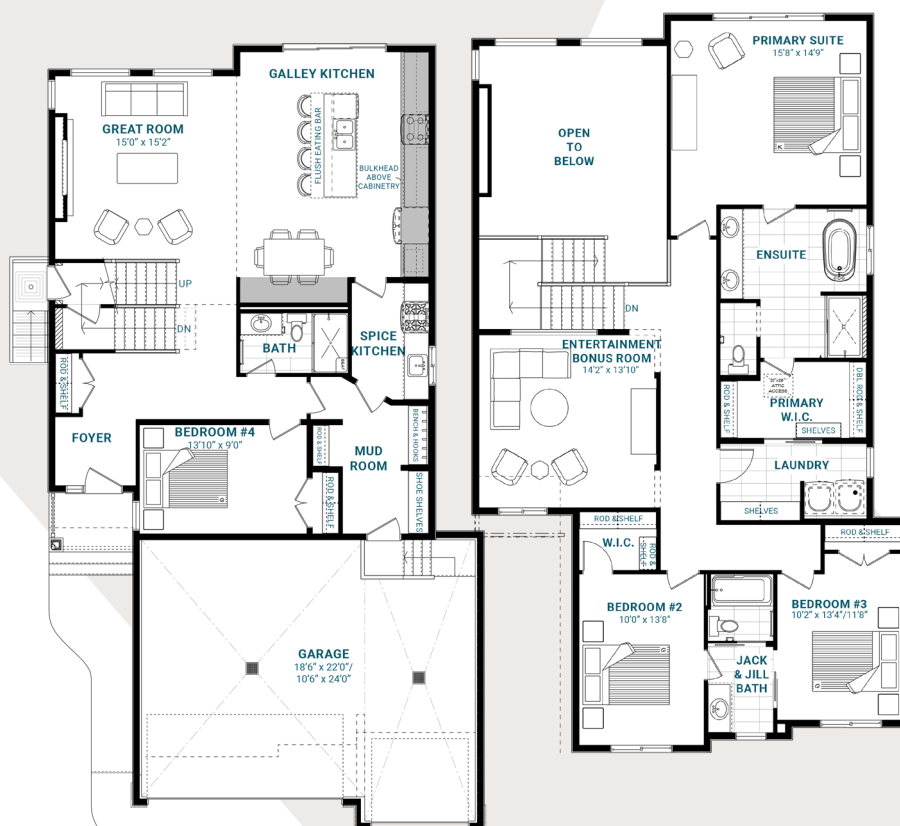


KEY FEATURES

- Prairie elevation with triple-car garage
- Ravine-backing corner lot
- Separate side entrance
- Spacious mud room with a built-in bench, hooks, and shoe shelves
- Fourth bedroom and full bathroom on the main floor
- Substantial island with an eating bar in the kitchen
- Spice kitchen for an elevated cooking experience
- 60" electric fireplace and open-to-below ceilings in the great room
- Second-floor laundry for your convenience
- Central entertainment bonus room
- Jack-and-Jill bathroom between bedroom #2 and #3
- Luxurious five-piece primary ensuite with a generous walk-in closet
- Nine-foot ceilings and three large windows in the basement

MAIN FLOOR

SECOND FLOOR



uplands@parkwoodhomes.ca

DISCLAIMER: Actual building units may not be exactly as shown. Renderings + blacklines are for illustrative purposes only and are subject to change without notice. All rights reserved, including the right of reproduction in whole or in part.

Parkwood