

Westport

in WestView at Chappelle

5057 Cawsey Link SW

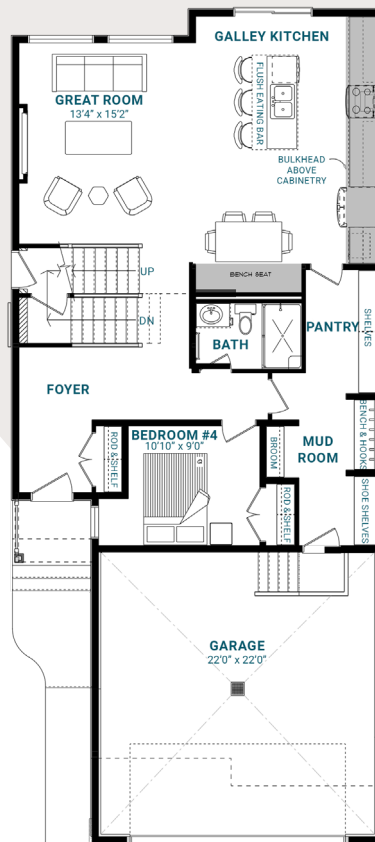
2,327 SQFT • 4 Bedrooms • 3 Bathrooms



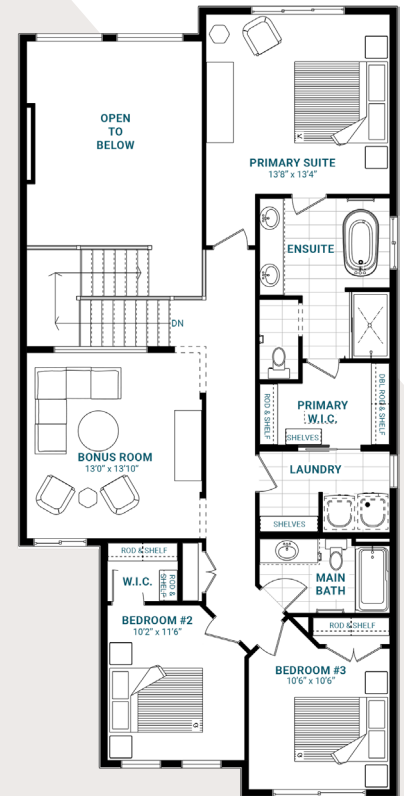
KEY FEATURES

- Modern Farmhouse elevation
- Separate side entrance and an additional basement window
- Main floor bedroom and full bathroom
- Generous mud room with a built-in bench, hooks, and shoe shelves with walk-through pantry access
- Substantial island with a flush eating bar in the galley kitchen
- Cozy dining nook with a built-in bench
- 60" electric fireplace in the great room
- Second-floor laundry for your convenience
- Central entertainment bonus room and three bedrooms upstairs
- Luxurious five-piece ensuite and generous walk-in closet with direct laundry access in the primary bedroom
- 150 amp electrical panel

MAIN FLOOR



SECOND FLOOR



chappelle@parkwoodhomes.ca

DISCLAIMER: Actual building units may not be exactly as shown. Renderings + blacklines are for illustrative purposes only and are subject to change without notice. All rights reserved, including the right of reproduction in whole or in part.

Parkwood