

Westport 36'

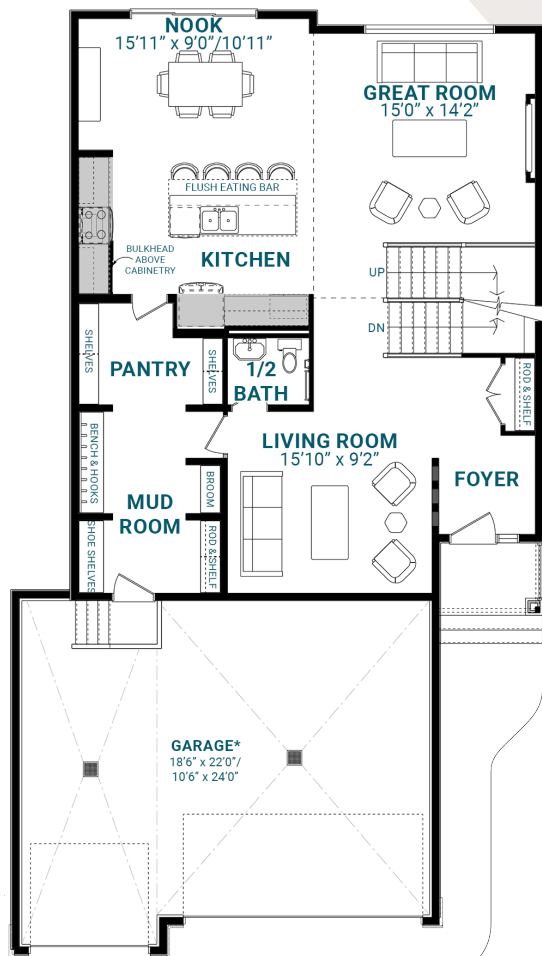
2,698 SQFT | 36' Wide | 3 Bedrooms | 2.5 Bathrooms

KEY FEATURES

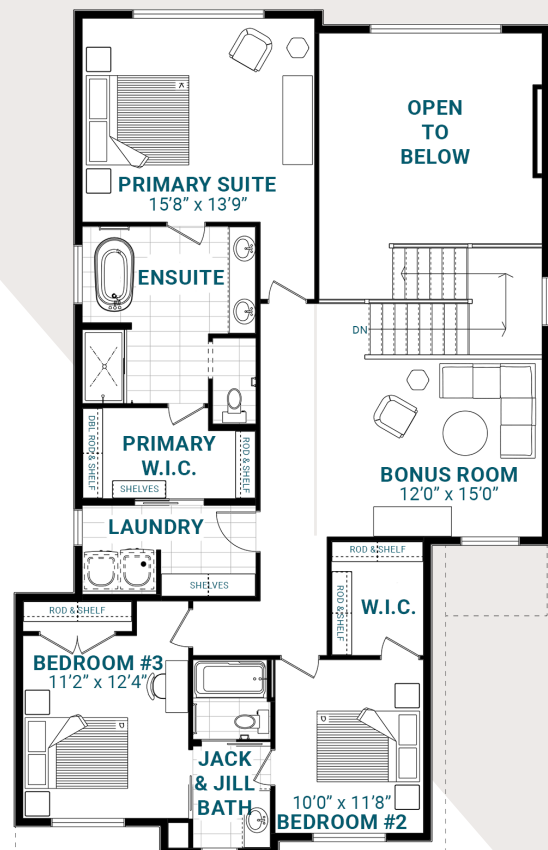
- Spacious mud room with walk-through pantry access
- Formal living room
- Open-to-below ceilings in the great room
- 60" electric fireplace
- Central bonus room
- Second-floor laundry
- Jack-and-Jill bathroom between Bedrooms #2 and #3
- Luxurious five-piece primary ensuite with a walk-in closet



MAIN FLOOR



SECOND FLOOR



info@parkwoodhomes.ca | parkwoodhomes.ca

DISCLAIMER: Actual building units may not be exactly as shown. Renderings + blacklines are for illustrative purposes only and are subject to change without notice. All rights reserved, including the right of reproduction in whole or in part.
2026 Master Plan


Parkwood