

Pearl 22

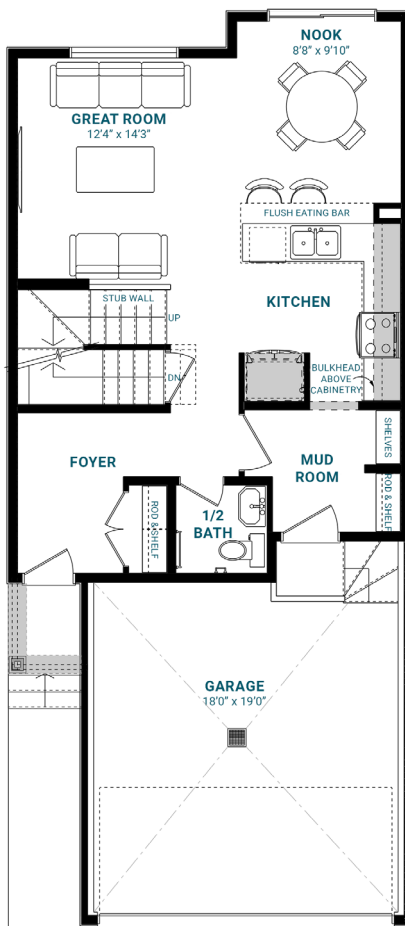
1,500 SQFT | 22' Wide | 3 Bedrooms | 2.5 Bathrooms

KEY FEATURES

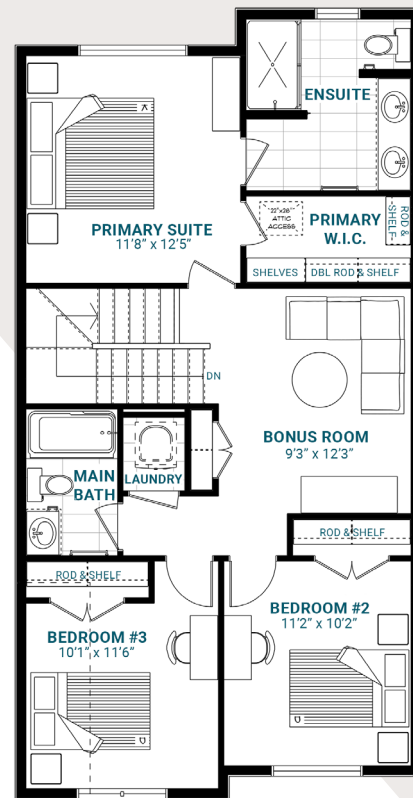
- Inviting foyer with a convenient coat closet
- Spacious mud room
- L-shaped kitchen with a flush eating bar
- Generous nook for casual dining
- Second-floor laundry for your convenience
- Central bonus room and three bedrooms upstairs
- Impressive four-piece primary ensuite with a walk-in closet



MAIN FLOOR



SECOND FLOOR



info@parkwoodhomes.ca | parkwoodhomes.ca

DISCLAIMER: Actual building units may not be exactly as shown. Renderings + blacklines are for illustrative purposes only and are subject to change without notice. All rights reserved, including the right of reproduction in whole or in part.
2026 Master Plan

