

# Parker 22

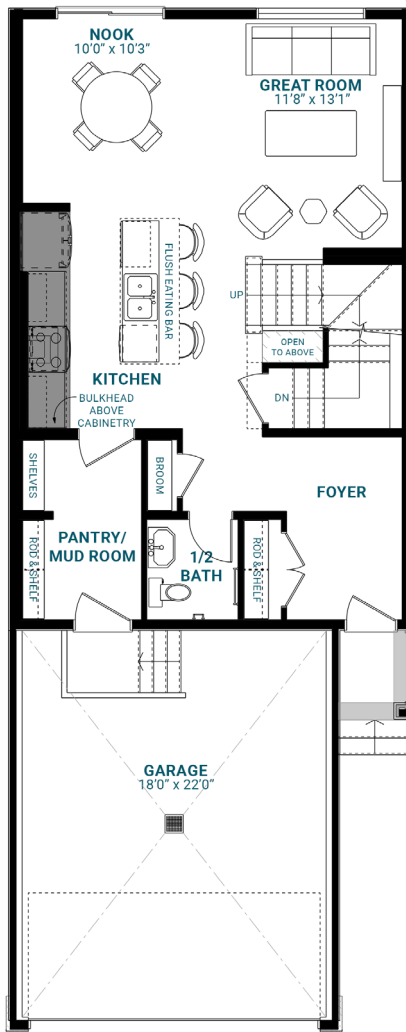
1,661 SQFT | 22' Wide | 3 Bedrooms | 2.5 Bathrooms

## KEY FEATURES

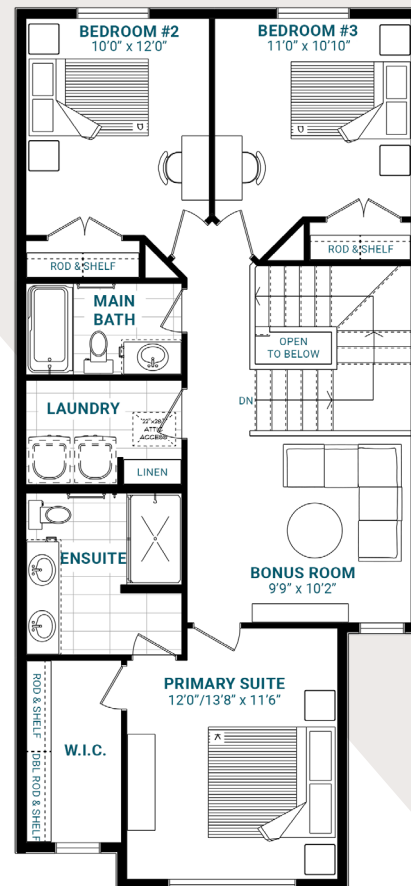
- Welcoming foyer for greeting guests
- Spacious mud room with walkthrough pantry access
- Galley-style kitchen with a substantial island and eating bar
- Generous nook for casual dining
- Second-floor laundry for your convenience
- Inviting four-piece primary ensuite with a walk-in closet



**MAIN FLOOR**



**SECOND FLOOR**



[info@parkwoodhomes.ca](mailto:info@parkwoodhomes.ca) | [parkwoodhomes.ca](http://parkwoodhomes.ca)

DISCLAIMER: Actual building units may not be exactly as shown. Renderings + blacklines are for illustrative purposes only and are subject to change without notice. All rights reserved, including the right of reproduction in whole or in part.  
2026 Master Plan

