

Newport 26

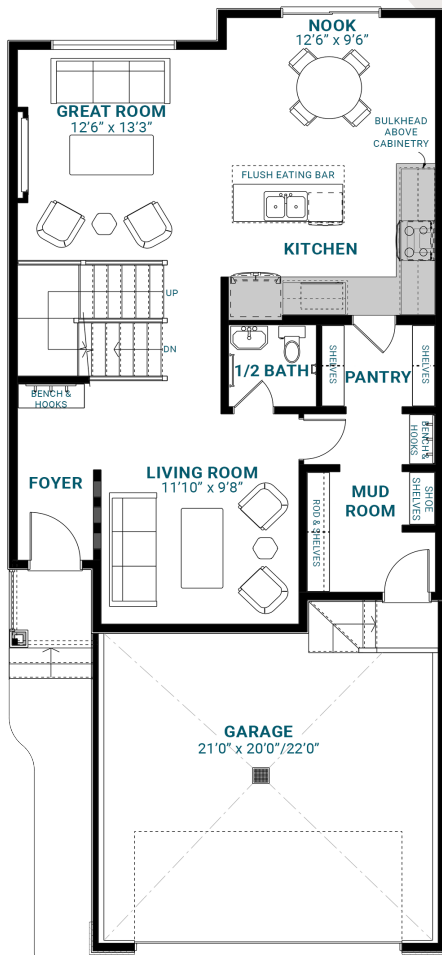
2,051 SQFT | 26' Wide | 3 Bedrooms | 2.5 Bathrooms

KEY FEATURES

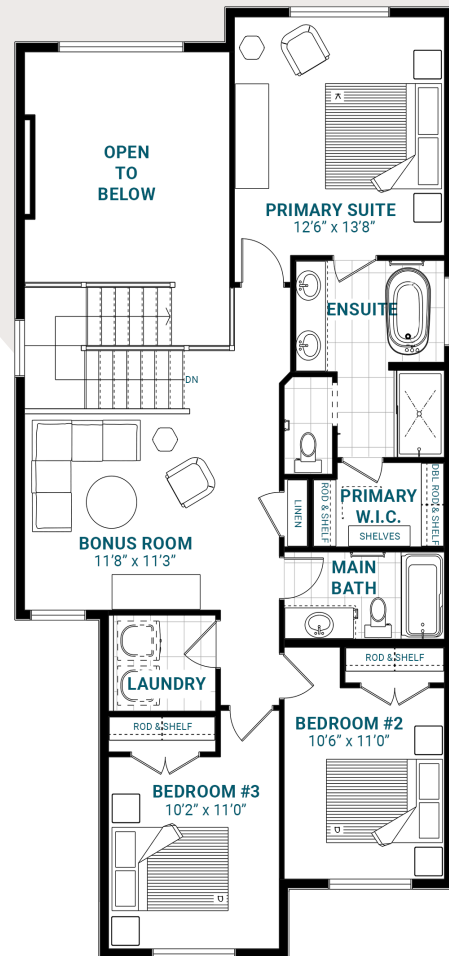
- Formal living room off the foyer
- Large mud room with walk-through pantry access
- Open-to-below ceilings and a 60" electric fireplace in the great room
- Second-floor laundry
- Central bonus room
- Three bedrooms upstairs
- Luxurious five-piece primary ensuite with a walk-in closet



MAIN FLOOR



SECOND FLOOR



info@parkwoodhomes.ca | parkwoodhomes.ca

DISCLAIMER: Actual building units may not be exactly as shown. Renderings + blacklines are for illustrative purposes only and are subject to change without notice. All rights reserved, including the right of reproduction in whole or in part.
2026 Master Plan

