

# Newport 24

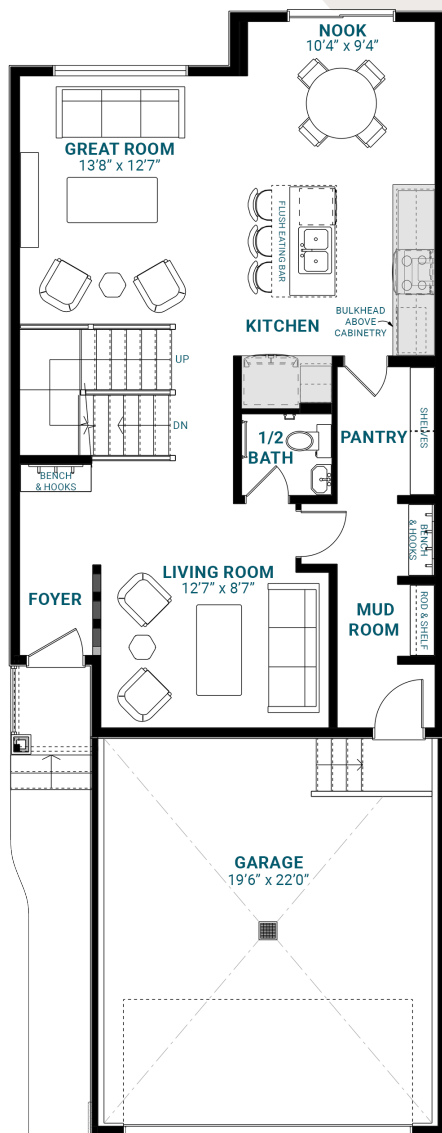
1,921 SQFT | 24' Wide | 3 Bedrooms | 2.5 Bathrooms

## KEY FEATURES

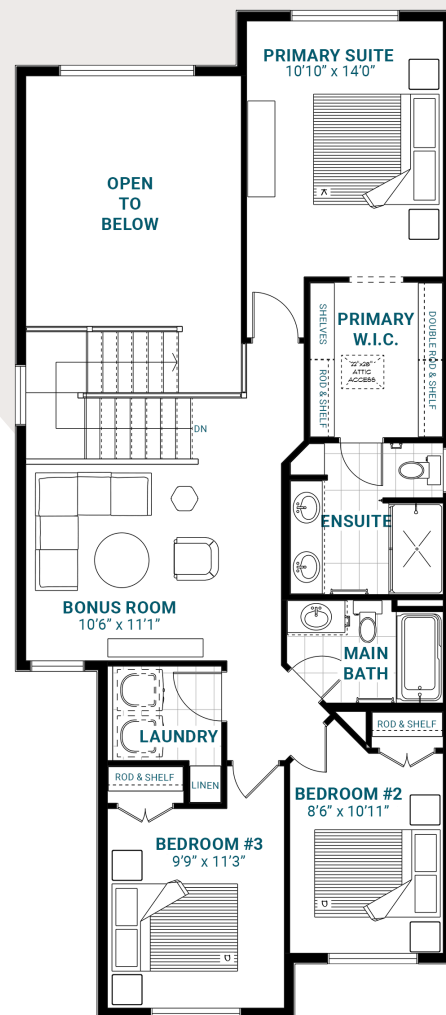
- Open-to-below ceilings
- Formal living room off the foyer
- Walk-through mud room
- Second-floor laundry
- Three bedrooms upstairs
- Luxurious five-piece ensuite and walk-in closet in the primary suite



### MAIN FLOOR



### SECOND FLOOR



[info@parkwoodhomes.ca](mailto:info@parkwoodhomes.ca) | [parkwoodhomes.ca](http://parkwoodhomes.ca)

DISCLAIMER: Actual building units may not be exactly as shown. Renderings + blacklines are for illustrative purposes only and are subject to change without notice. All rights reserved, including the right of reproduction in whole or in part.  
2026 Master Plan

  
**Parkwood**