

Alexandria 26

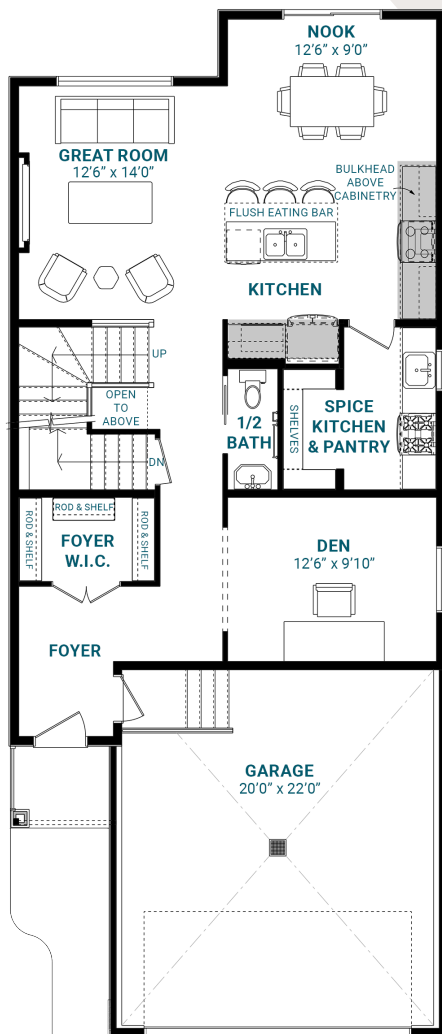
2,267 SQFT | 26' Wide | 4 Bedrooms | 3.5 Bathrooms

KEY FEATURES

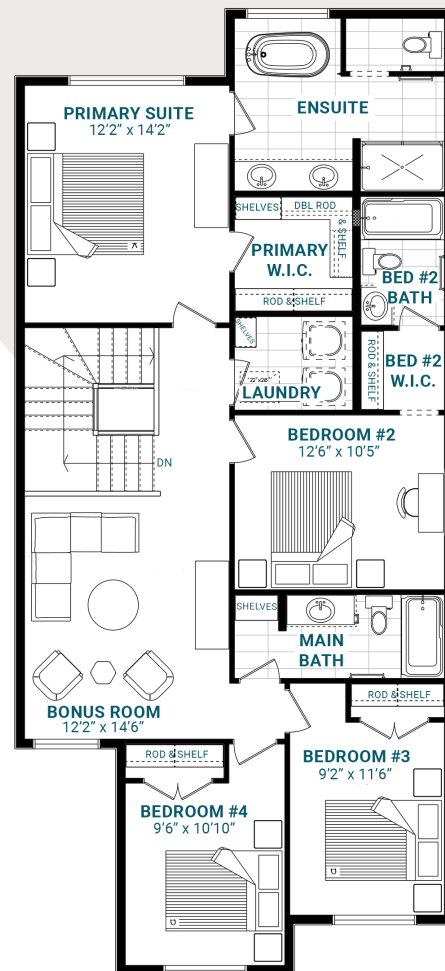
- Walk-in closet in the foyer
- Versatile den on the main floor
- Standard spice kitchen for an elevated cooking experience
- 60" electric LED fireplace in the great room
- Second-floor laundry for your convenience
- Four bedrooms upstairs with an ensuite in bedroom #2
- Luxurious five-piece primary ensuite and a walk-in closet



MAIN FLOOR



SECOND FLOOR



info@parkwoodhomes.ca | parkwoodhomes.ca

DISCLAIMER: Actual building units may not be exactly as shown. Renderings + blacklines are for illustrative purposes only and are subject to change without notice. All rights reserved, including the right of reproduction in whole or in part.
2026 Master Plan

Parkwood