

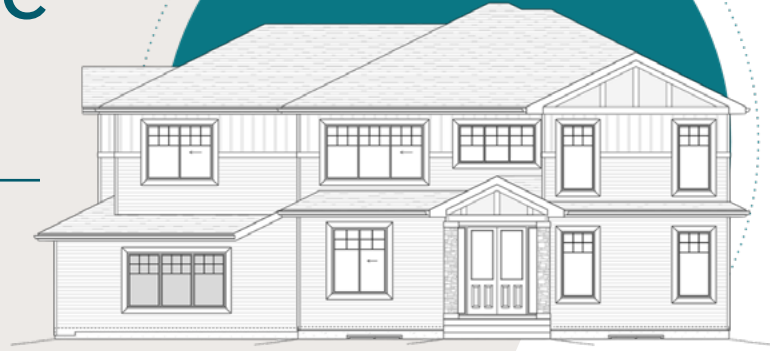
Custom Executive in Aster

904 19 Avenue NW

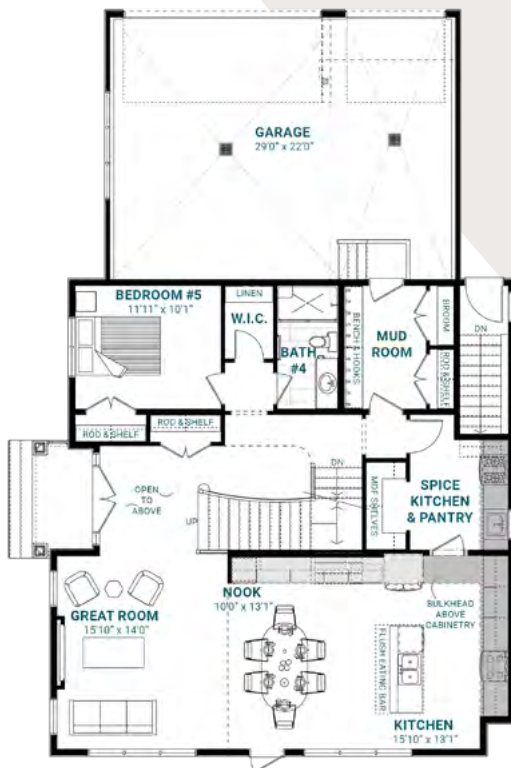
2,951 SQFT • 5 Bedrooms • 4 Bathrooms

KEY FEATURES

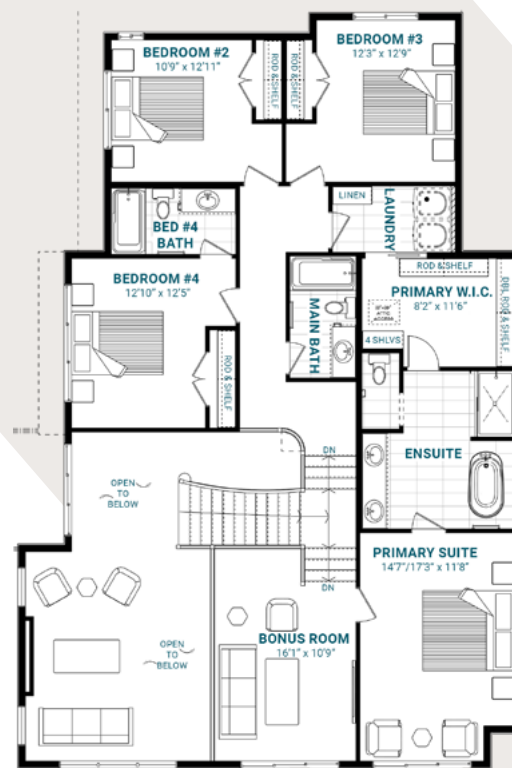
- Triple-attached garage and a separate side entrance
- Double-door front foyer entry
- Spacious mud room with a built-in bench and hooks
- Fifth bedroom and full bathroom on the main floor
- Spice kitchen with a walk-in pantry for an elevated cooking experience
- Substantial kitchen island with a flush eating bar
- Open-to-above ceilings in the foyer and great room
- 60" electric LED fireplace in the great room
- Second-floor laundry for your convenience
- Four bedrooms and three baths upstairs (two ensuites)
- Nine-foot basement ceilings



MAIN FLOOR



SECOND FLOOR



aster@parkwoodhomes.ca

DISCLAIMER: Actual building units may not be exactly as shown. Renderings + blacklines are for illustrative purposes only and are subject to change without notice. All rights reserved, including the right of reproduction in whole or in part.

Parkwood