

Pearce in West Secord

22705 93A Avenue NW

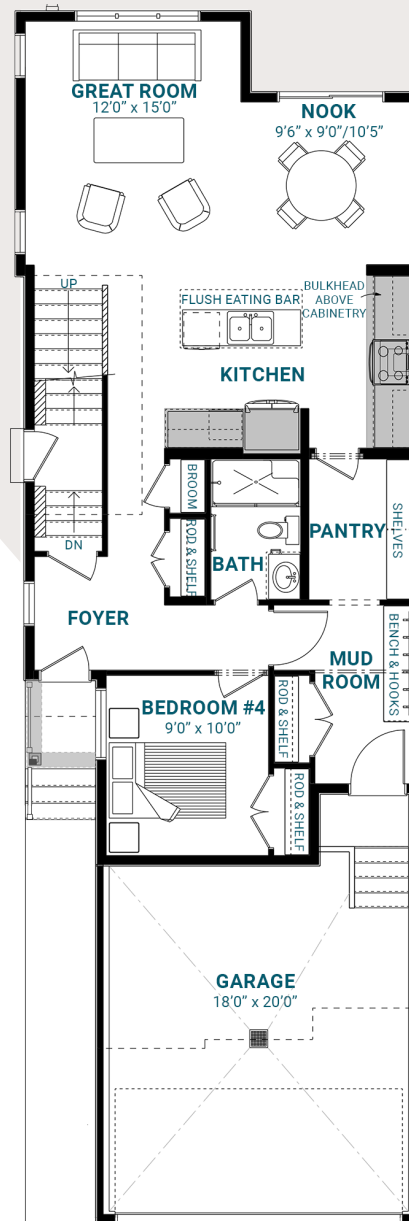
2,003 SQFT • 4 Bedrooms • 3 Bathrooms



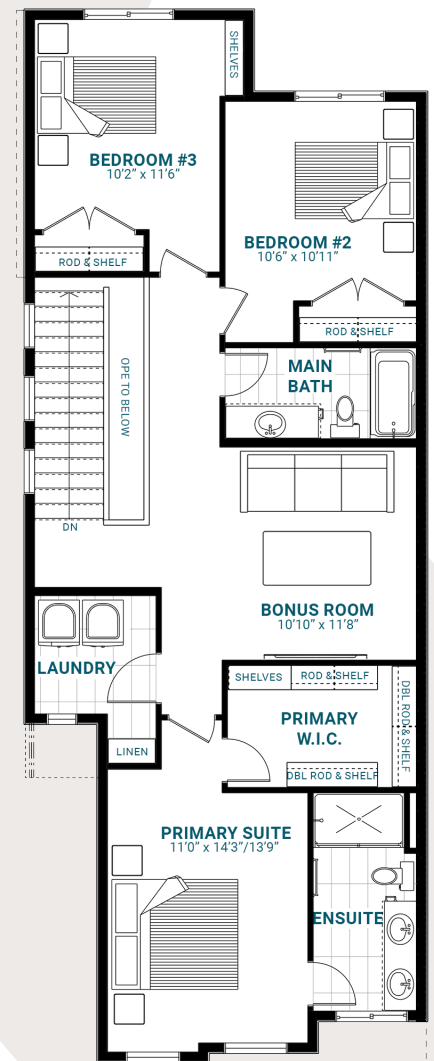
KEY FEATURES

- Modern elevation
- Desirable corner lot
- Separate side entrance
- Fourth bedroom and full bathroom on the main floor
- Additional windows in the foyer, den, and stairwell
- Spacious mud room and a large walk-through pantry
- Inviting open-concept in the great room and kitchen space
- Substantial island with a flush eating bar in the kitchen
- Second-floor laundry for your convenience
- Cozy central bonus room
- Impressive four-piece ensuite and generous walk-in closet in the primary bedroom
- Basement plumbing rough-ins for future basement development

MAIN FLOOR



SECOND FLOOR



westsecord@parkwoodhomes.ca

DISCLAIMER: Actual building units may not be exactly as shown. Renderings + blacklines are for illustrative purposes only and are subject to change without notice. All rights reserved, including the right of reproduction in whole or in part.

Parkwood