

Westport in Jagare Ridge

191 Hays Ridge Boulevard SW

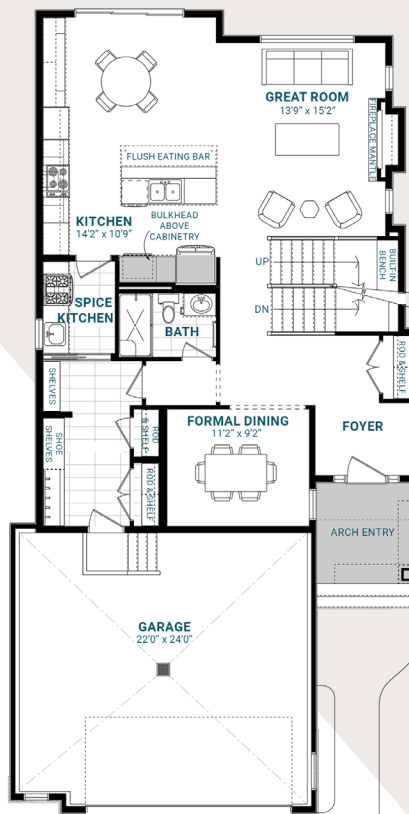
2,456 SQFT • 3 Bedrooms • 3 Bathrooms



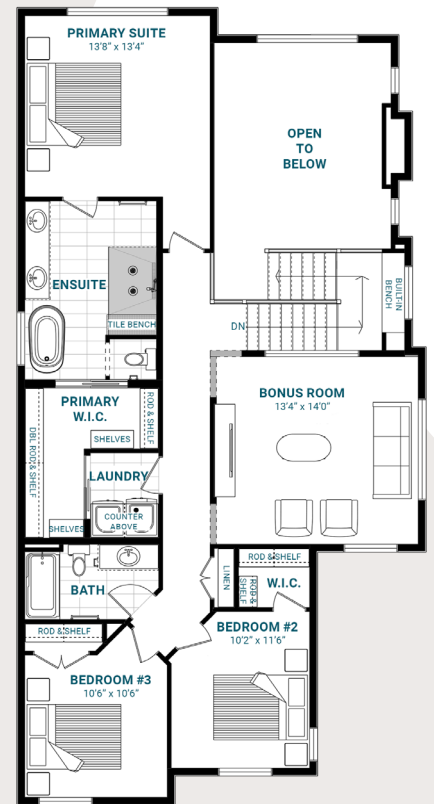
KEY FEATURES

- Tudor elevation with a chic archway over the front entry
- Elegant archway into the formal dining room
- Generous mud room with walk-through access to the kitchen
- Standard spice kitchen for an elevated cooking experience
- Built-in wine storage within extensive kitchen cabinetry
- Stunning 60" electric fireplace feature and soaring open-to-below ceilings in the great room
- Unique reading nook tucked into the staircase landing
- Entertainment bonus room with glass panel detail that shows off a golf course view through the great room window
- Luxurious five-piece primary ensuite with elevated shower details and a walk-in closet with laundry access

MAIN FLOOR



SECOND FLOOR



jagareridge@parkwoodhomes.ca

DISCLAIMER: Actual building units may not be exactly as shown. Renderings + blacklines are for illustrative purposes only and are subject to change without notice. All rights reserved, including the right of reproduction in whole or in part.


Parkwood