

Equinox - E5 & E8

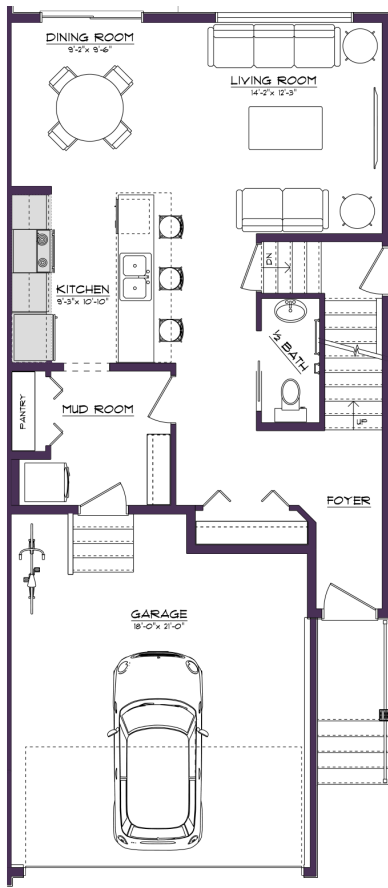
1,630 SQFT • 3 Bedrooms • 2.5 Bathrooms



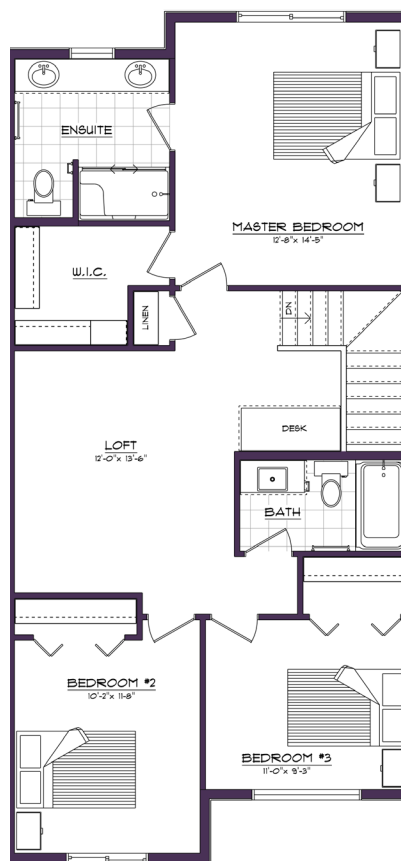
Key Features

- Double-car Garage
- Coastal Contemporary Exterior
- Side Entry for a Future Legal Suite
- Galley-style Kitchen with a Large Eating Bar
- Generous Dining Nook
- Laundry Located in the Mud Room
- Spacious Loft Upstairs with an Extended Nook
- 4-piece Primary Ensuite + Walk-in Closet

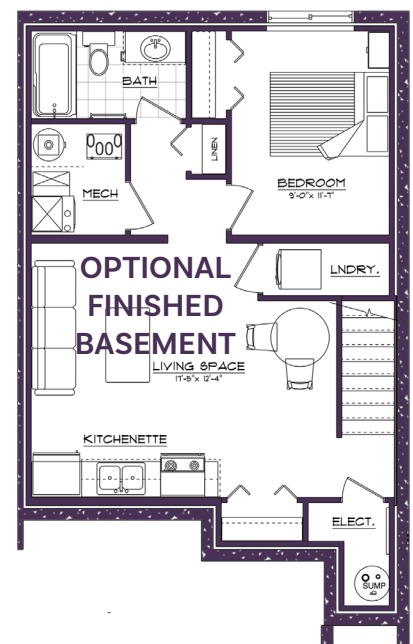
MAIN FLOOR



SECOND FLOOR



BASEMENT



DISCLAIMER: Actual building units may not be exactly as shown. Renderings + blacklines are for illustrative purposes only and are subject to change without notice. All rights reserved, including the right of reproduction in whole or in part.

THE
RISE
at Mattson

Equinox - E6 & E7

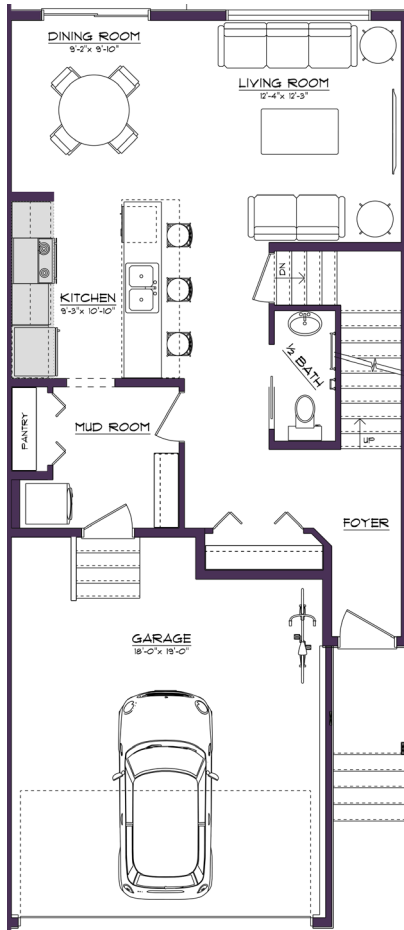
1,623 SQFT • 3 Bedrooms • 2.5 Bathrooms



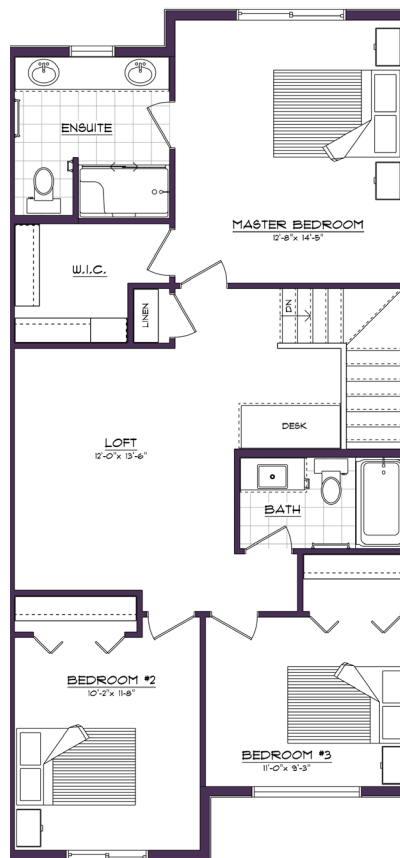
Key Features

- Double-car Garage
- Coastal Contemporary Exterior
- Open and inviting Front Foyer
- Galley-style Kitchen with a Large Eating Bar
- Generous Dining Nook
- Laundry Located in the Mud Room
- Spacious Loft Upstairs with an Extended Nook
- 4-piece Primary Ensuite + Walk-in Closet

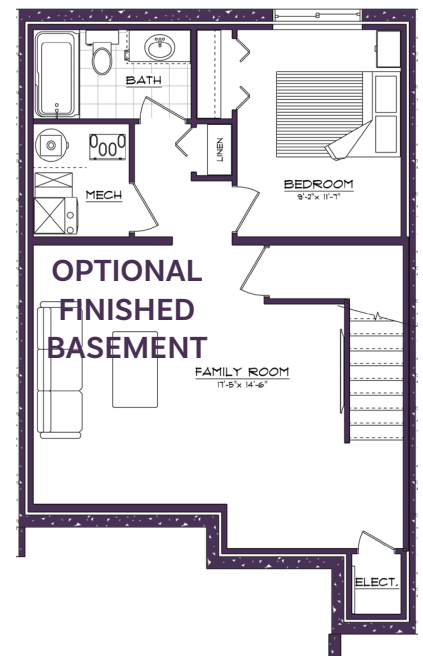
MAIN FLOOR



SECOND FLOOR



BASEMENT



THE
RISE
at Mattson

DISCLAIMER: Actual building units may not be exactly as shown. Renderings + blacklines are for illustrative purposes only and are subject to change without notice. All rights reserved, including the right of reproduction in whole or in part.