

Equinox

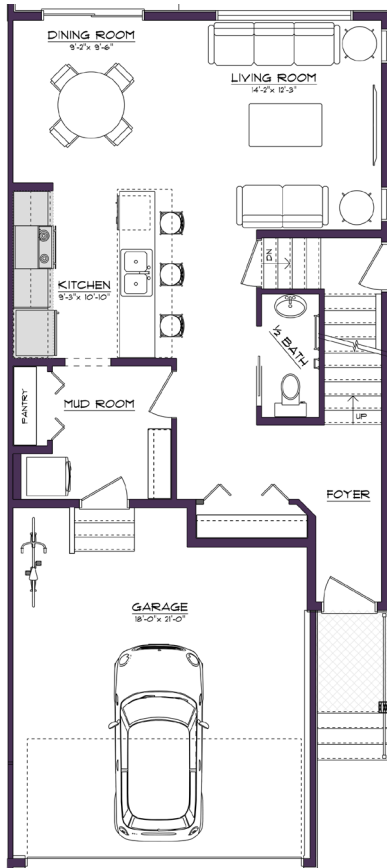
1,630 SQFT • 3 Bedrooms • 2.5 Bathrooms



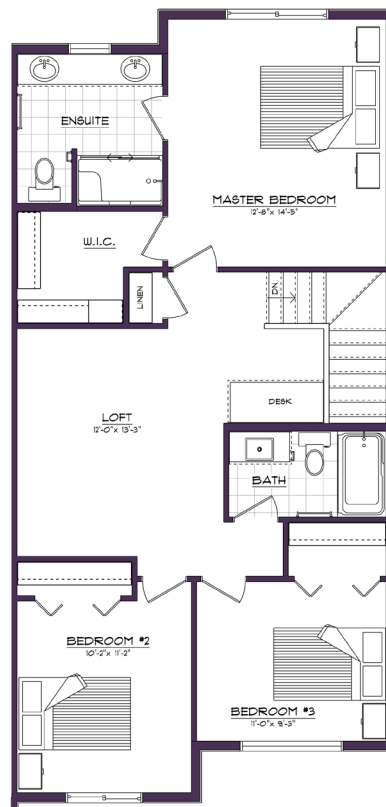
Key Features

- Double-car Garage
- Coastal Contemporary Exterior
- Side Entry for a Future Legal Suite
- Galley-style Kitchen with a Large Eating Bar
- Generous Dining Nook
- Laundry Located in the Mud Room
- Spacious Loft Upstairs with an Extended Nook
- 4-piece Primary Ensuite + Walk-in Closet

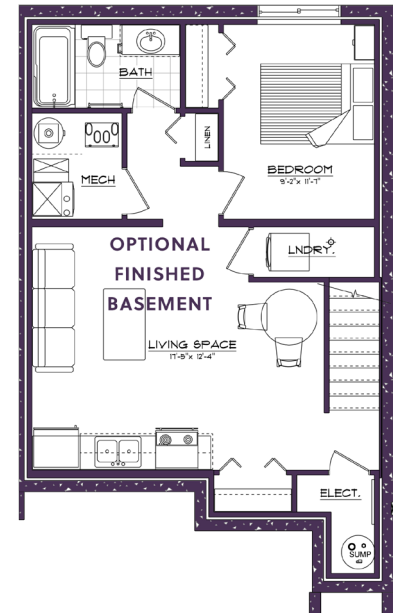
MAIN FLOOR



SECOND FLOOR



BASEMENT



DISCLAIMER: Actual building units may not be exactly as shown. Renderings + blacklines are for illustrative purposes only and are subject to change without notice. All rights reserved, including the right of reproduction in whole or in part.

THE
RISE
at Mattson