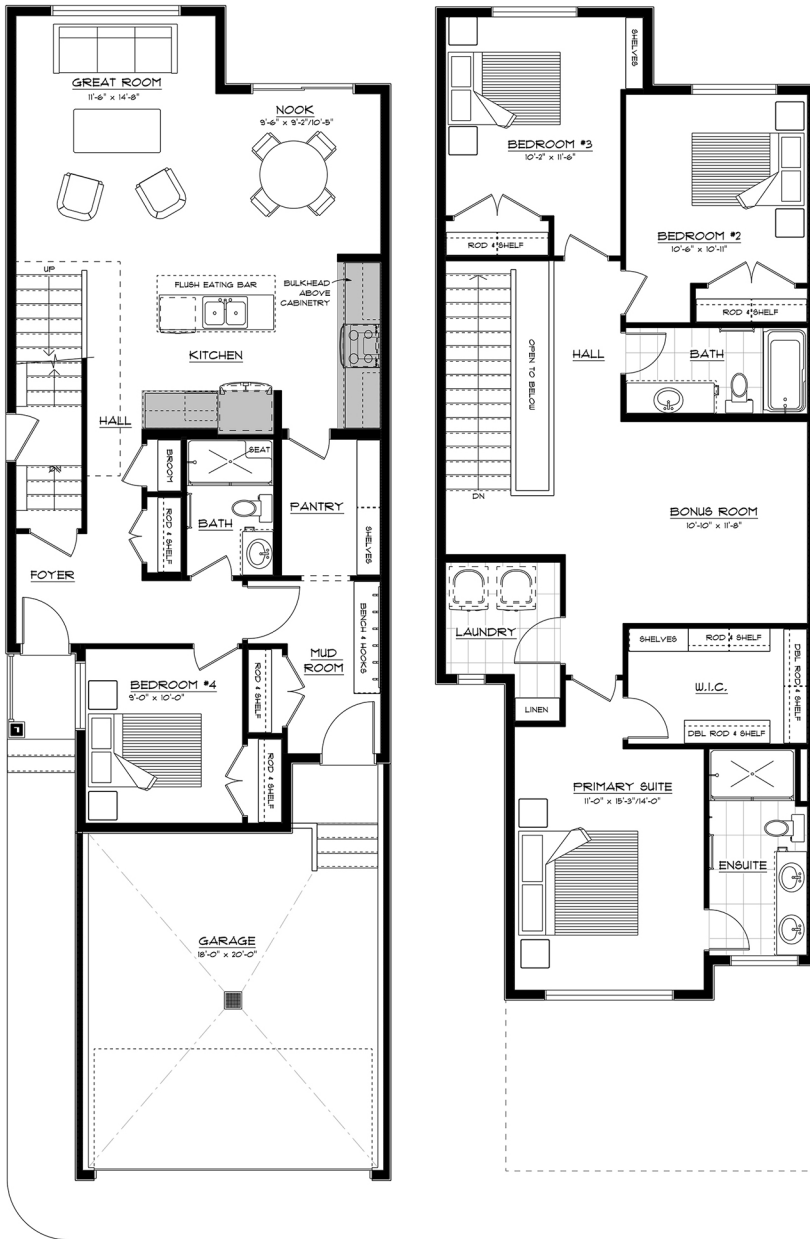


Parkwood

MASTER BUILDER

PEARCE IN WEST SECOND



**22814 93A AVENUE NW
TWO STOREY
1,995 SQ.FT.
4 BED • 3 BATH**

INCLUDED FEATURES:

- Modern Farmhouse elevation
- Separate side entry for a future Legal Suite
- Spacious Mud Room from the garage entrance to a large walk-through pantry for quick grocery unloading
- An entertainer's Kitchen featuring a large island with eating bar
- Main Floor Bed + Full Bath for family or visiting guests
- Cozy central Bonus Room for gathering
- Convenient Second Floor Laundry
- Expansive Primary Suite with spa-like 4-piece Ensuite featuring a glass shower and dual vanities
- Rough-in Bathroom plumbing in the Basement
- This floor plan is for illustrative purposes. This home reflects the reverse plan.

AREA SALES MANAGER: Lionel Hertlein

EMAIL: lhertlein@parkwoodhomes.ca

SHOWHOME LOCATION: 9304 226 Street NW

CELL PHONE NUMBER: 780.920.6093

SHOWHOME PHONE NUMBER: 780.469.4754

SHOWHOME HOURS: Monday – Thursday: 3:00pm – 8:00pm

Friday: Closed

Sat, Sun & Holidays: 12:00pm – 5:00pm